

SHIELD-PACK™ HV630



Shield-Pack™ HV630

SHIELD-PACK™ FAMILY BENEFITS

- Inner connector with TPA can be plugged into header during device assembly (on wire-to-device)
- Industry's most compact 630 2-way system
- Industry leading vibration performance

HV630 FEATURES

- Tool-less unmating system
- Finger proof/touch safe
- Panel mount to device with face seal (on wire-to-device)
- Aluminum compression bushings
- ISO cable compatible
- Secondary terminal locking



AVAILABLE CONFIGURATIONS

Connector Type	Wire-to-device & wire-to-wire
Cable Exit Orientation	180°
Cable Range	2 - 6 mm ²
Terminal Type	CTS 6.3
# of Terminals	2
Shielding Type	Individual
HVIL	None
Assembly Assurance	TPA (wire-to-device) CPA (wire-to-wire)
Number of Indexes	3 (wire-to-device) 2 (wire-to-wire)
Header Footprint	38 x 43 mm

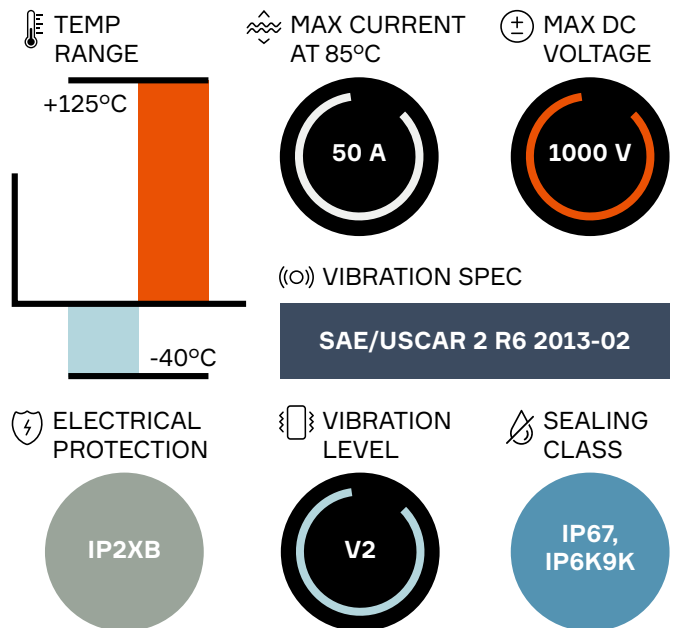


APPLICATIONS

Electric AC, HV heater, DC/DC converter, other HV auxiliary devices



TECHNICAL CHARACTERISTICS

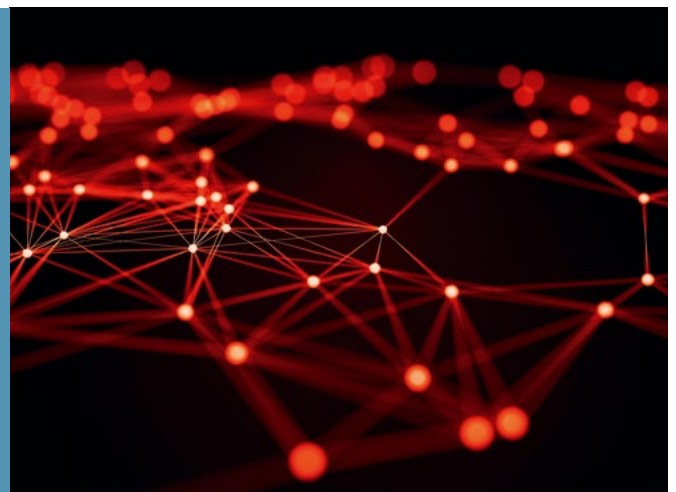


See back page for representative part numbers and packaging dimensions.

About Aptiv

Aptiv is a global technology company that develops safer, greener and more connected solutions enabling the future of mobility. Headquartered in Dublin, Aptiv has approximately 150,000 employees and operates 14 technical centers, as well as manufacturing sites and customer support centers in 45 countries.

Visit aptiv.com



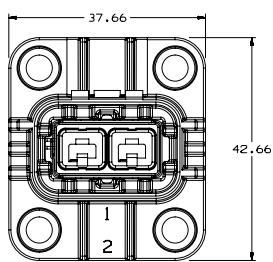


PART NUMBERS

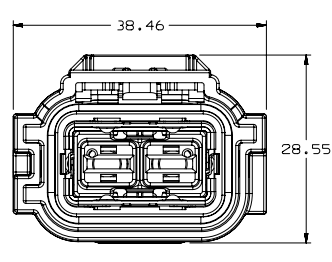
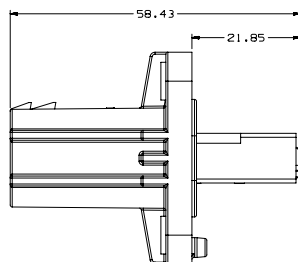
Index	Header Connector		Inline Connector	Harness Connector
	Connector	Inner		
101	35201196	35028833	35201706	35028839
102	35201197	35028834	35201707	35028840
103	35201198	35028835	35201708	35028841



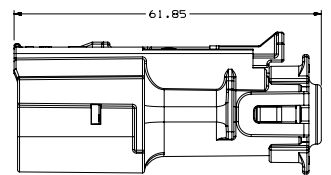
DIMENSION MEASUREMENT SAMPLE



35201196



35028839



COMPATIBLE WITH



Part numbers, specifications, dimensions and performance data in this document are for general references only and are subject to change without notice. To verify product information, please contact an Aptiv representative.

CS-SP76-HV-En0119